

Western Sydney Urban Land Release

Western Sydney, NSW

Project Type

Urban extension

Date

2002-2005

ESD Role

Principal Urban Designers, Assistant EBD Leader

Project Size

26,000ha, population 380,000 by 2030

Client

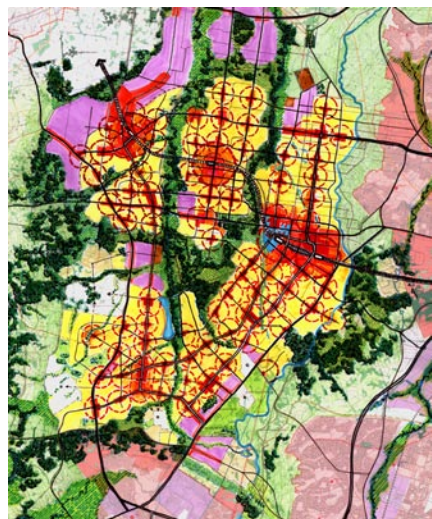
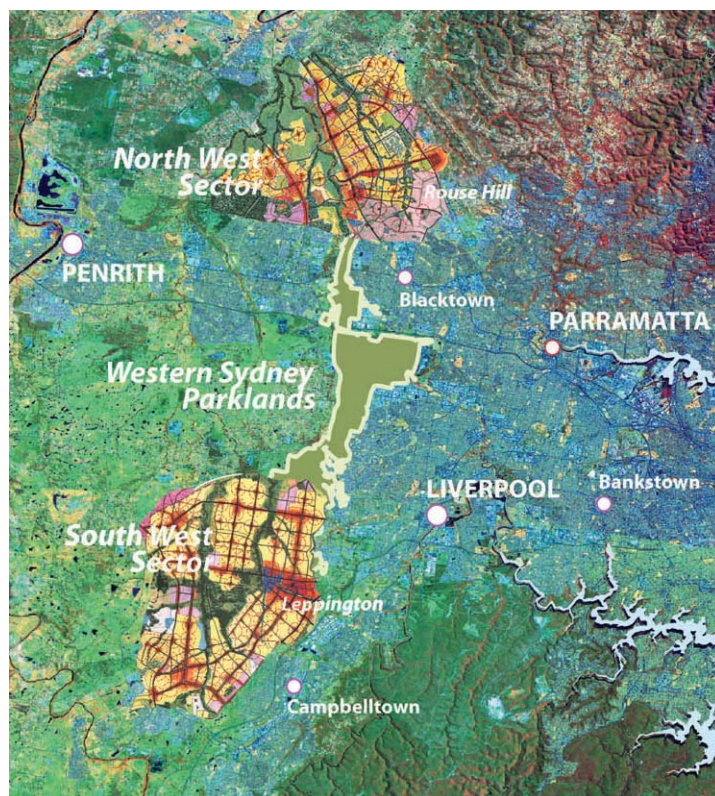
NSW Department of Infrastructure, Planning and Natural Resources

Implementation Status

Growth Centres Commission established and infrastructure funding approved by State

Further Information

www.metrostrategy.nsw.gov.au



In 2002 the NSW Department of Infrastructure, Planning and Natural Resources commissioned ESD as part of a large team of consultants to plan this State-initiated urban extension for the two remaining large areas of the Sydney Basin available for urban development. As Sydney's last chance to achieve large-scale sustainable greenfield development within the Sydney Basin, the Project aims to ensure the sustainability of its important and sensitive natural environment, while optimising its urban sustainability within a mandated urban structure of mixed-use walkable neighbourhoods, towns and regional centres, all linked by multi-modal public transport and a finely grained street network. In thousands of ownerships and several municipalities, these lands contain farms, rural residential development, nationally significant Cumberland Plain Woodlands, and a few small townships.

DIPNR conducted two five-day Enquiry by Design Workshops (one of North-West Sydney and the other for South-West Sydney), led by Evan Jones the Director of Sydney Strategy, to design both areas, engaging all key stakeholders. Participants produced indicative designs to determine whether, when and how various development scenarios could be achieved for specific sites and objectives. Concurrently these indicative designs were tested for sustainability and development feasibility.

In December 2004 the State approved regional structure plans and set up a Growth Centres Commission to implement them, budgeting \$8 billion for civic, road and public transport infrastructure, to be jointly funded by the public and private sectors. In the approved Structure Plans, both the natural and urban habitats have been configured, linked and located to optimise their long-term viabilities, with a net-gain in habitat conservation. Seven colonial National Trust farms and their curtilages will be preserved.

Referee: Evan Jones (now with Multiplex) at evan.jones@multiplex.biz, tel 08 9483-0899.

Ecologically Sustainable Design

esdesign@netspace.net.au