

# Wynnum CBD Renewal Planning Charrette

Brisbane, Queensland

**Project Type**

CBD Revitalisation

**Date**

2006

**ESD Role**

Charrette Leader

**Project Size**

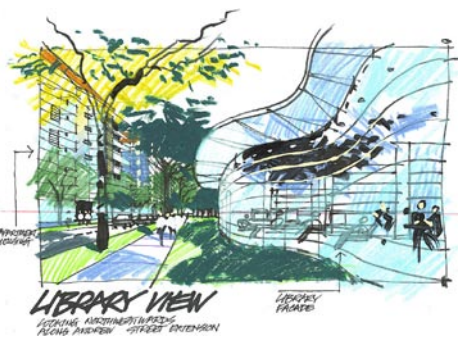
Approximately 10 hectares

**Client**

Wynnum CBD Urban Renewal Coalition Inc.

**Implementation Status**

Incremental implementation is under way



As a result of a successful Wynnum TOD Enquiry by Design Workshop led by ESD (ostensibly for teaching purposes), the Wynnum CBD Urban Renewal Coalition hired ESD to lead the Wynnum Charrette.

By 2005, new large stand-alone enclosed shopping centres nearby had begun to weaken the retail and commercial draw of the small CBD of Wynnum, one of Brisbane's older Bayside suburbs. But Wynnum has a passenger rail station linking to Brisbane's CBD about a half hour away, and the CBD had great potential to revive, if key players could cooperate and capitalise on Wynnum's recent designation as a Principal Activity Centre in the 2005 SEQ Regional Plan. There were many empty and underdeveloped sites within and near the CBD. What was needed was to catalyse stakeholder cooperation with a compelling and achievable Vision for the future.

The Wynnum Charrette attracted hundreds of stakeholders and citizens, and collaboratively designed the redevelopment of dozens of sites within the CBD, along with proposing new parks and community facilities and a large retirement development, all concentrating around an improved railway station.

During the Charrette, word quickly spread of how the community was responding, and both Brisbane's mayor and deputy mayor decided to attend the concluding presentation. After the cheering had subsided, both politicians declared support in principle for the project, to close the meeting. The deputy mayor declared the Charrette to have been the most exciting event in his twenty year political career.

Implementation is proceeding within both Government and the private sector. In 2007, the Planning Institute of Australia awarded the Wynnum Charrette its National Award for Social and Community-based Planning.